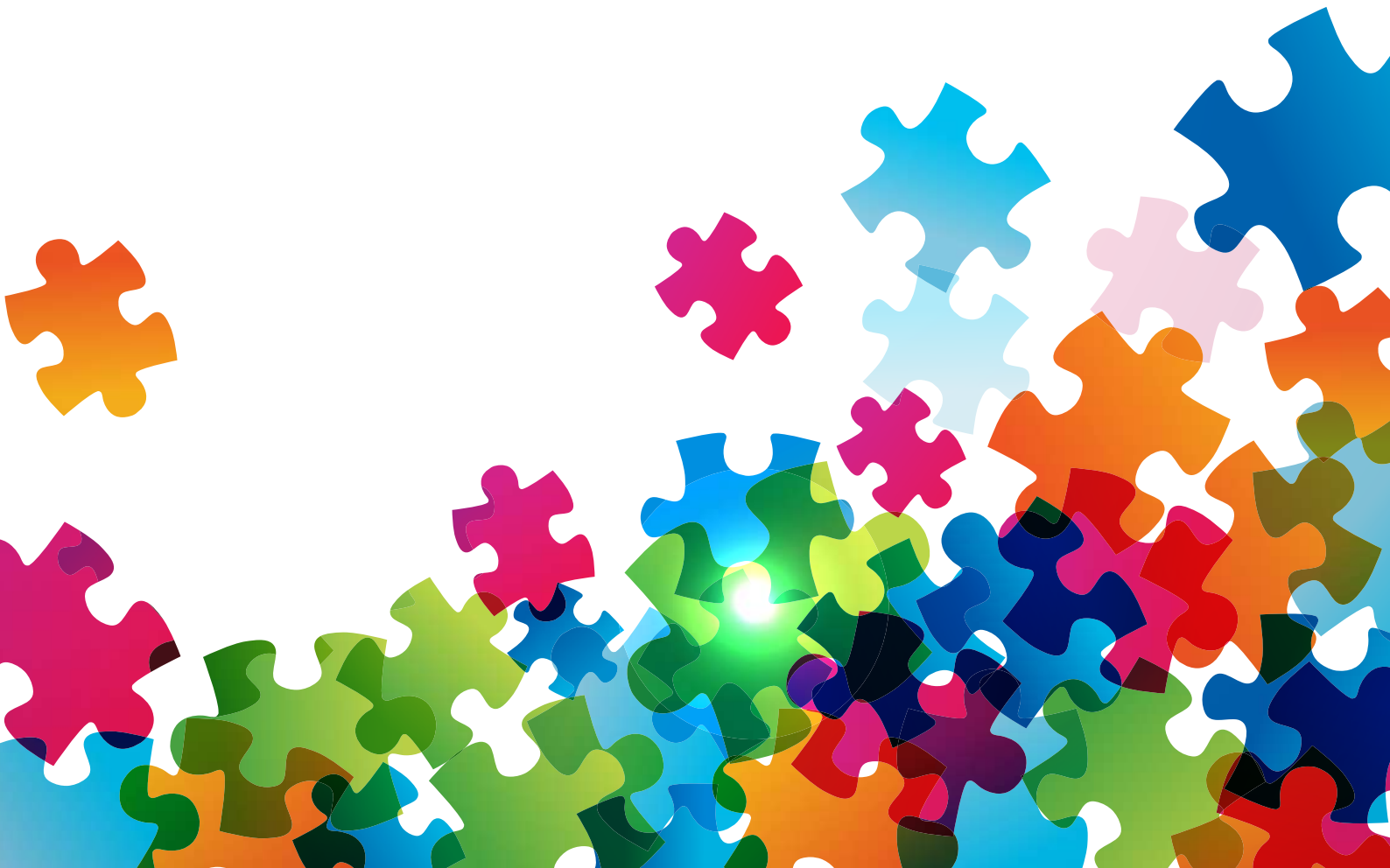


# PUZZLE CATALOGUE



Build and learn puzzles



A cold night (12 piece)



At the beach (12 piece)



Bathroom (4 piece)

Birds (24 piece)



Birthday party (6 piece)



Child headed family (8 piece)

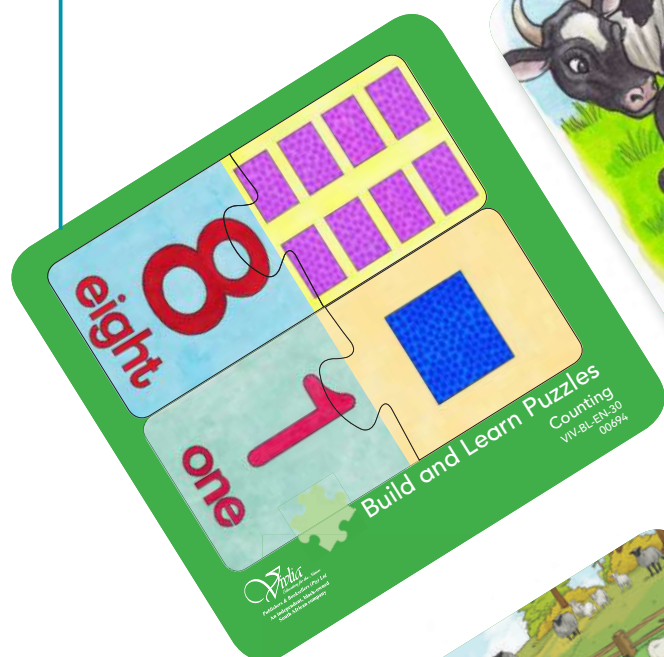


Clothes of the seasons (4x4 piece)



Coloured family (9 piece)

Counting (20 Individual pieces)



Dairy products (6 piece)



Domestic Animals (24 piece)



Fruit and Vegetables (16 piece)



Geometric shapes (24 piece)



Getting ready for school (4x6 piece)



Granny and kids (9 piece)



In the classroom (9 piece)

Integrated family (16 piece)



Keeping clean (6 piece)



Mixed race family (12 piece)



My School (12 piece)



My senses (9 piece)



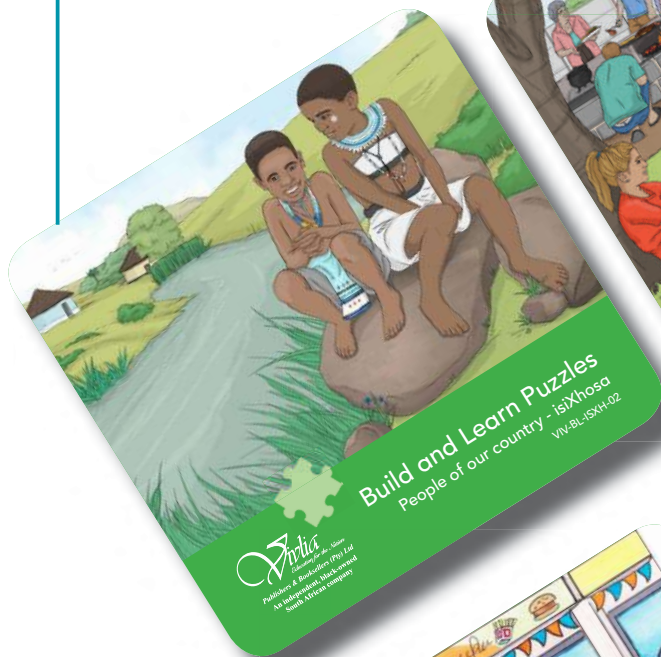
People at work (8x6 piece)



People of our country - English (24 piece)

People of our country - Indian (24 piece)

People of our country - IsiXhosa  
(24 piece)



People of our country - Afrikaans  
(24 piece)



At the petrol station (6 piece)



Road safety (9 piece)



The Seasons (4x4 piece)



Shapes and Numbers (20 Individual pieces)



Single family (12 piece)



South African Money (18 piece)

Sports day (20 piece)



The body (2x16 piece)  
floor puzzle (A2)



The Hospital (6 piece)

The Swan (8 piece)





The park (24 piece)

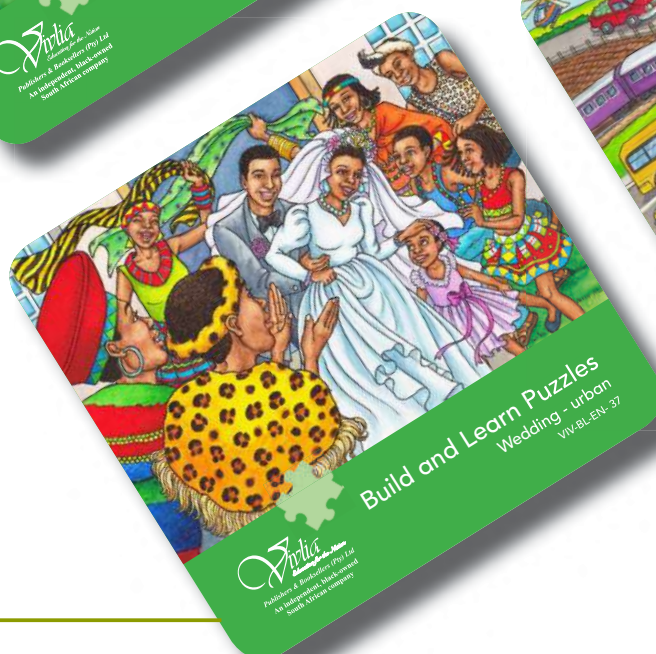


The Supermarket (36 piece)



Transport (16 piece)

Wedding - Urban (9 piece)



Typical family (9 piece)



Wild Animals (12 piece)



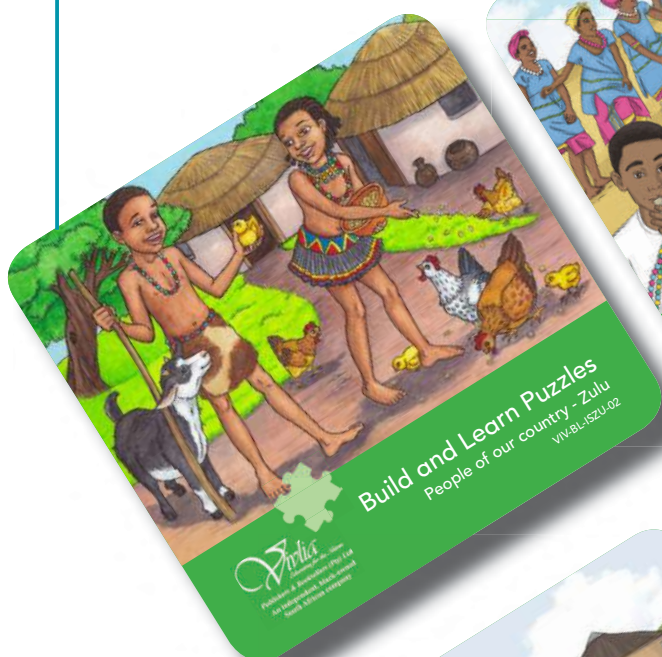
Wool products (6 piece)



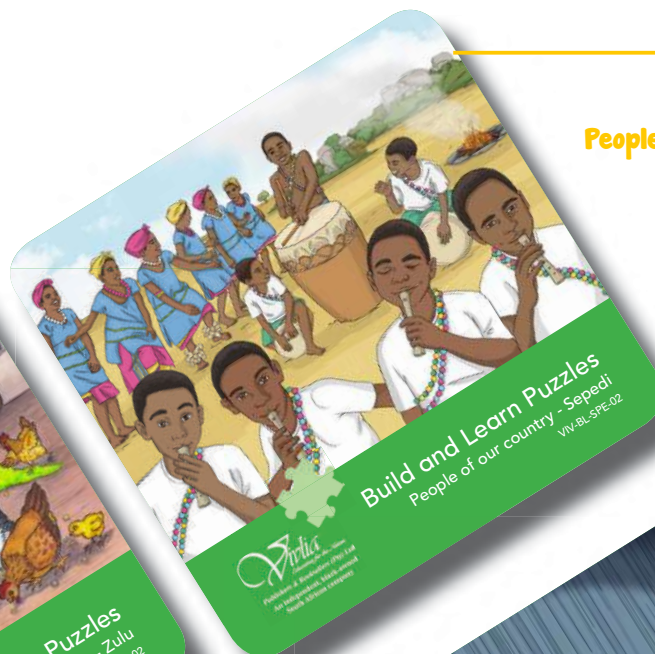
Wedding - IsiXhosa (24 piece)



People of our country - Zulu  
(24 piece)



People of our country - Sepedi  
(24 piece)



People of our country - Sesotho  
(24 piece)



People of our country - Setswana  
(24 piece)

**People of our country - Siswati  
(24 piece)**



**Wedding - Ndebele  
(24 piece)**

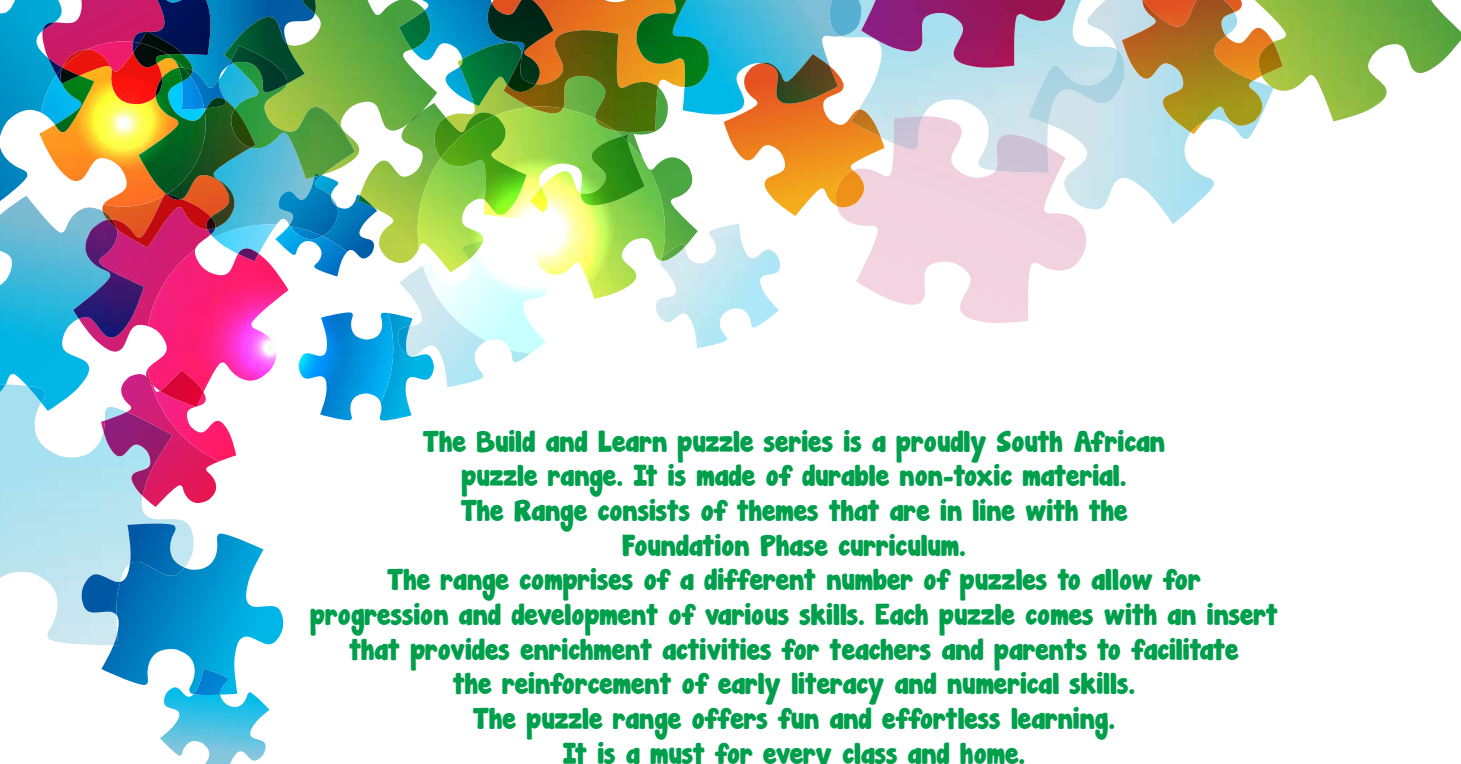


**Wedding - Sesotho  
(24 piece)**



**Wedding - Siswati  
(24 piece)**





The Build and Learn puzzle series is a proudly South African puzzle range. It is made of durable non-toxic material. The Range consists of themes that are in line with the Foundation Phase curriculum.

The range comprises of a different number of puzzles to allow for progression and development of various skills. Each puzzle comes with an insert that provides enrichment activities for teachers and parents to facilitate the reinforcement of early literacy and numerical skills. The puzzle range offers fun and effortless learning. It is a must for every class and home.

National: (0861)848542  
Head Office: 0114723912  
International: +27 114723912  
Fax: 0114724704  
E-Mail: [headoffice@vivlia.co.za](mailto:headoffice@vivlia.co.za)  
Web: [www.vivlia.co.za](http://www.vivlia.co.za)



*Vivlia*  
*Education for the Nation*  
Publishers & Booksellers (Pty) Ltd  
An independent, black-owned  
South African company

